

BRANDEIS UNIVERSITY "SPLASH" 2019
(S223) **Intro: Human Cardiology**
Syllabus: Revised January 24, 2019

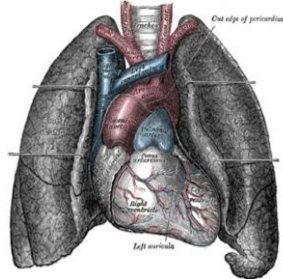


Figure 490, *Gray's Anatomy*, 1858,
Henry Gray, FRS (1827–1861)
Illustration by Henry Vandyke Carter, MD (1831–1897)

Time: SATURDAY, FEBRUARY 2, 2019
Section I: 12:00 p.m. – 1:00 p.m. Section II: 1:00 p.m. – 2:00 p.m.
*I will also be available **by appointment** before class, 10:00 a.m. to 12:00 p.m.*
(feel free to email me and we will set up a place and time to discuss any questions
or comments you have regarding the course).

Location: OLIN-SANG AMERICAN CIVILIZATION CENTER, ROOM 124
This building is located near the Rabb Graduate Center in Upper Campus.
You can find the location using the interactive campus map at:
<https://www.brandeis.edu/about/visiting/map.html>

Instructor: Matt Stenerson
(mstenerson@brandeis.edu)

About me: Hi, everyone! I am very excited to be teaching this course and look forward to meeting you all in February. I am currently a senior at Brandeis in the neuroscience BS/MS program. I work in the Marder Lab, and the topic of my master's thesis pertains to quantitation of neuron morphology. I hope to attend medical school after college—perhaps like some of you! In addition to this course, I am also teaching S222: Frontiers in Neurological Surgery. Please feel free to reach out to me by email with any questions.

Overview: The goal of this course is to make an ample amount of cardiology-related material available to you, while still hopefully having some fun. In the interest of your own learning, I will be supplying some “study guides” prior to our class on February 2. Please note that you are still welcome to attend class even if you don’t want to read the study guides or participate in the quiz (discussed later). They are both optional!

During our meeting on February 2, we will start by playing a short game of “Jeopardy” to review some of the material from the study materials. We will also discuss some of the interesting problems in modern cardiology and cardiothoracic surgery.

Handouts The following study guide handouts will be provided:

- **Handout A: *Anatomy & Physiology***
- **Handout B: *Electrocardiography (ECG)***
- **Handout C: *Pathophysiology***

These handouts are primarily meant for your own edification. They will also prepare you for the short game of “Jeopardy” in class and will serve as excellent study guides should you choose to participate in the competitive quiz at the end of the course. For additional practice, I will post a practice exam with answer key. Please note that this practice exam is meant to be challenging, and it is okay if you do not understand everything. Please feel free to reach out to me by email with any questions you have about the course material.

Quiz: Upon completing this course, there will be a competition in the form of an optional quiz. The person with the highest score between the two sections will win a \$25 Starbucks gift card (which will be mailed to you or available for pickup at Brandeis). The quiz will be administered as a Google Form and will be open-note; any material from the course as well as any material found online may be referenced. **I ask that you please work on this independently.** The quiz will open at 6:55 p.m. on Saturday, February 2 (the day of class) and will close at 11:55 p.m. the same night. Once you submit the quiz, you will not be allowed to revise your answers.

NOTE: The rigor of the quiz will reflect that of a college-level science class, so don't panic if you find it difficult! Content of the quiz will draw from the study guides and material covered in class. The breakdown of the quiz will be:

- 25% Anatomy (labeling diagrams)
- 35% Electrocardiography (basic interpretation)
- 40% Physiology & Pathophysiology
 - Multiple choice
 - Fill-in-the-blank
 - Short answer